

**EQUIPMENT SCHEDULE**

- |  |  |
|--|--|
| 1. VEG CHILLER.                          | 40. UPRIGHT FRIDGE.                        |
| 2. KREAM BALL MACHINE.                   | 40. STORAGE SHELVING.                      |
| 3. TILL.                                 | 41. INSECT KILLER.                         |
| 3a. SELF SERVICE KIOSK.                  | 42. WALL MOUNTED PATCH CABINET.            |
| 3b. HANDHELD TERMINAL.                   | 44a. FLOOR STANDING PATCH CABINET.         |
| 4. POST MIX 6 HEAD DISPENSE.             | 43. ICE CREAM MACHINE.                     |
| 4a. POST MIX 7 HEAD DISPENSE.            | 44. FRIDGE UNIT UNDER.                     |
| 5. COFFEE MACHINE.                       | 45.  |
| 5a. COFFEE MACHINE SLIMLINE.             | 46. SAFE.                                  |
| 6. HC55.                                 | 47. LANDING TABLE.                         |
| 6a. HC55 BASE.                           | 48. 2 DRAWER FILING CABINET.               |
| 7. BUN CHUTE.                            | 49. MOBILE BUN DEFROST UNIT.               |
| 7a. 2 TIER TRANSFER BIN                  | 50. PHONE.                                 |
| 7b. 3 TIER TRANSFER BIN                  | 51. WORKTOP ON CHROME LEGS.                |
| 7c. BUCKET CHUTE                         | 52. WALL MOUNTED VIDEO CUPBOARD.           |
| 8. CHIP DUMP / PASS THRU.                | 53. KITCHEN BIN.                           |
| 9. DIVERSEY UNIT.                        | 54. FIRE ALARM INDICATOR PANEL.            |
| 10. MICROWAVE.                           | 55. DISHWASHER.                            |
| 10a. MICROWAVE TABLE.                    | 56. S/S WALL.                              |
| 11. CHIP FREEZER.                        | 57. DUKE HSHU HOT HOLD TO B.S. - 3x2 HIGH. |
| 11a. LARGE CHIP FREEZER.                 | 59a. DUKE HSHU HOT HOLD TO HCW- 2x2 HIGH.  |
| 12. 4 HEAD HENNY PENNY.                  | 58. STAR GRILL.                            |
| 12a. 6 HEAD COLECTROMATIC.               | 59. WATER MAIN.                            |
| 13. 8 HEAD HENNY PENNY.                  | 60. WATER CYLINDER / BOILER LOCATION.      |
| 14. 14" FRYER (EVOLUTION ELITE).         | 61. INTRUDER ALARM PANEL.                  |
| 14a. 14" DOUBLE FRYER (EVOLUTION ELITE). | 62. BRITVIC DRINKS COOLER.                 |
| 14b. 14" TRIPLE FRYER (EVOLUTION ELITE). | 63. KEY BOX.                               |
| 14c. 14" FRYER (PITCO).                  | 64. THAW CABINET.                          |
| 14d. 14" DOUBLE FRYER (PITCO).           | 65. MOP STORAGE.                           |
| 14e. 14" DOUBLE FRYER (PITCO).           | 66. MUSIC PLAYER                           |
| 14f. 18" FRYER.                          | 67.  |
| G INDICATES GAS.                         | 68. COLD FOOD TABLE.                       |
| 15. COUNTER.                             | 69. TWISTER DRAWER.                        |
| 16. HC900.                               | 70. STAR GRILL TABLE.                      |
| 16a. HC900 - FLAPS IN PLACE OF DOOR.     | 71.  |
| 17. BUN TOASTER.                         | 72. HCW5.                                  |
| 18. WHB.                                 | 73. GOODS HOIST.                           |
| 19. BURGER STATION.                      | 74. FREESTANDING COLD DRAWER 1100x700mm.   |
| 20. SINGLE BREADING TABLE.               | 76a. HC55 COLD DRAWER 1100x700mm.          |
| 20a. LINEAR DOUBLE BREADING TABLE.       | 75. RATIONALE OVEN.                        |
| 20b. BACK TO BACK DOUBLE BREADING TABLE. | 78a. RAZZLE MACHINE.                       |
| 20c. SLIMLINE BREADING TABLE.            | 78b. PUMP AND TOPPING MACHINE.             |
| 20d. NEXT GEN BREADING TABLE.            | 78c.                                       |
| 21. UPRIGHT FREEZER.                     | 78d. TABLE TOP CARPIAGANI.                 |
| 22. S/S TABLING/BENCH.                   | 78e. BLENDERS & TOPPING TABLE.             |
| 22a. MOBILE CHICKEN PACKING TABLE.       | 79a. FOOD QUALITY MANAGEMENT PANEL         |
| 23. HC903.                               | 79b. FOOD QUALITY MANAGEMENT MONITOR       |
| 24. HCW3.                                | 80. POSITION OF 2nd HOT WATER SUPPLY.      |
| 24a. HCW3 BASE.                          | 81. OIL MANAGEMENT SYSTEM TANK.            |
| 25. LABEL PRINTER                        | 82. CO2 STORAGE.                           |
| 26. HOT DRAWERS.                         | 83a. SINGLE UNDER COUNTER PEPSI FRIDGE.    |
| 27. HEADSET BASE LOCATION.               | 83b. DOUBLE UNDER COUNTER PEPSI FRIDGE.    |
| 28. BOTTLE STORAGE.                      | 83c. UPRIGHT PEPSI FRIDGE.                 |
| 29. FREEZER ROOM.                        | 84. INTERNAL GREASE TRAP.                  |
| 30. COLD ROOM.                           | 84a. COMBINED GREASE TRAP MOP SINK.        |
| 31. ICE MACHINE.                         | 85. BRUSH RACK.                            |
| 32. 3 BOWL SINK - 2550x750.              | 86. ELECTRICAL SERVICE COLUMN.             |
| 32a. SINGLE BOWL SINK.                   | 87. PDMO HOSE.                             |
| 32b. 3 BOWL SINK - 1650x950.             | 88. BIFFA BIN.                             |
| 33. S/S SHELVING.                        | 89. LEARNING ZONE.                         |
| 34. CHEMICAL CUPBOARD.                   | 90. FUSION TIMER.                          |
| 35. COLD DRAWERS.                        | 91. AMBIENT DISPLAY.                       |
| 36. POST MIX SYRUPS.                     | 92. FTUS.                                  |
| 37. EXTRACT HOODS.                       | 93. FTUS FILTER.                           |
| 38. MOP SINK.                            | 94. PACKAGING TOWER.                       |
| 39. ELECTRIC SWITCHGEAR.                 | 95. DUAL SOFT SCOOP DISPENSER.             |
| 40. BAIN MARIE.                          | 96. MANITOWOC ES2 OVEN.                    |

**MIDDLE HOUSE MONITOR KEY**

	burger station pack screen		order ready		cctv monitor
	pack screen		beverage		d/t monitor
	chicken pack screen		burger chute (provisional)		zippy screen (provisional)
	drive thru expedite		under counter expedite screen - perspex panel to counter top with screen under		

**INTERNAL & EXTERNAL FURNITURE SCHEDULE**

location	internal	external	location	internal	external
existing seats			proposed seats	30	
existing tables			proposed tables	10	
existing sets			proposed sets	12	

**BOH EQUIPMENT COLOURS SCHEDULE**

unchanged equipment numbers (black)	00.	additional equipment numbers (red)	00.
repositioned equipment numbers (green)	00.	provisional equipment numbers (blue)	00.

**GROUND FLOOR AREA SCHEDULE**

front of house area	43.5 m <sup>2</sup>	468 ft <sup>2</sup>
back of house area (inc counter)	103.4 m <sup>2</sup>	1112.5 ft <sup>2</sup>
staff amenity area	13.3 m <sup>2</sup>	143.1 ft <sup>2</sup>

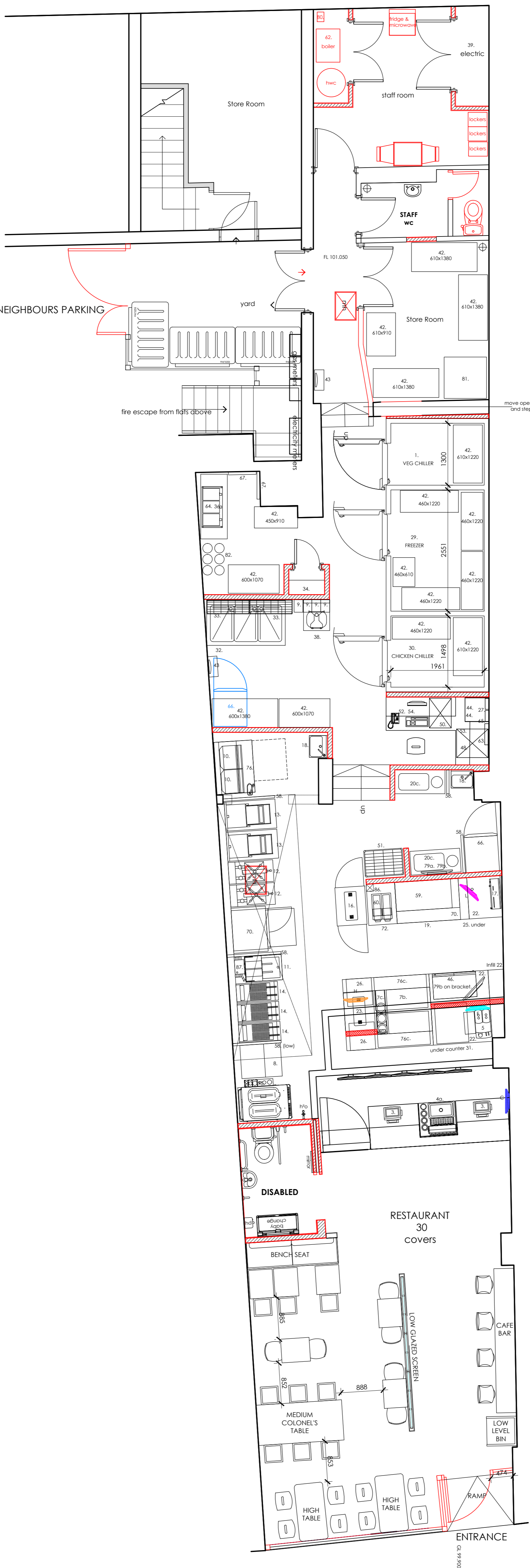
**RACKING SCHEDULE**

location	existing linear	proposed linear
chicken chiller	n/a	2.5
veg chiller	n/a	1.3
freezers	n/a	5.2
dry storage	n/a	7.6

KFC UKI  
DEVELOPMENT DRAWING APPROVAL

**APPROVED** FOH

NAME	TITLE	SIGNED	DATE
Emmet Leddy	Architectural Technician		17/08/17



**HONE EDWARDS ASSOCIATES**

Design Studio  
Millars Three  
Southmill Road  
Bishop's Stortford  
Herts. CM23 3DH  
email: firstname.lastname@honeedwards.co.uk

Tel: 01279 758545  
Fax: 01279 757730

ALL DIMENSIONS TO BE CHECKED ON SITE

DO NOT SCALE FROM THIS DRAWING EXCEPT FOR THE PURPOSES OF LOCAL AUTHORITY PLANNING

**proposed general arrangement plan**  
scale - 1:50 @ A1 / 1:100 @ A3

SCALE 1:50 only 0 1 2 3 4 5 10



Store Address  
**FINCHLEY**  
793 HIGH ROAD  
FINCHLEY  
LONDON

Drawn By IE	Checked By JE	Date MAY 2017
Store No. 0000	Scale 1:50 @ A1	

Drawing No. 0000/2017/G100	Revision
-------------------------------	----------

Drawing No. 2706/G100	Revision C
--------------------------	---------------

Rev	Date	Revision
A	05.06.17	Revised BOH as per KFC's comments RJS
B	13.06.17	Oil tank note removed & 79a added RJS
C	04.07.17	FOH revised as per KFC's comments RJS

Rev	Date	Revision

HIGH STREET

Drawing Title  
**PROPOSED GA PLAN**